

MTB ALL MOUNTAIN



PREDATOR AMF / AMR

CY NO.	SIZE	ETRTO	TECHNOLOGY	COMPOUND	TPI	COLOR	BEAD	
PREDATOR AMF	H-5249TR	29x2.50	64-622	TLR/ SPS	2C-AM	66	Black	Foldable
PREDATOR AMF	H-5249TR	29x2.35	60-622	TLR/ SPS	2C-AM	66	Black	Foldable
PREDATOR AMR	H-5248TR	29x2.50	64-622	TLR/ SPS	2C-AM	66	Black	Foldable
PREDATOR AMR	H-5248TR	29x2.35	60-622	TLR/ SPS	2C-AM	66	Black	Foldable



PEGASOS F/R

CY NO.	SIZE	ETRTO	TECHNOLOGY	COMPOUND	TPI	COLOR	BEAD	
PEGASOS F	H-5265TR	29x2.6	66-622	TLR/ Dual Defense/ Pro Bead	3C-DH	126	Black	Foldable
PEGASOS F	H-5265TR	29x2.6	66-622	TLR/ S+PS/ Pro Bead	3C-AM	66	Black	Foldable
PEGASOS R	H-5266TR	29x2.6	66-622	TLR/ Dual Defense/ Pro Bead	3C-DH	126	Black	Foldable
PEGASOS R	H-5266TR	29x2.6	66-622	TLR/ S+PS/ Pro Bead	3C-AM	66	Black	Foldable
PEGASOS F	H-5265TR	29x2.4	61-622	TLR/ Dual Defense/ Pro Bead	3C-DH	126	Black	Foldable
PEGASOS F	H-5265TR	29x2.4	61-622	TLR/ S+PS/ Pro Bead	3C-AM	66	Black	Foldable
PEGASOS R	H-5266TR	29x2.4	61-622	TLR/ Dual Defense/ Pro Bead	3C-DH	126	Black	Foldable
PEGASOS R	H-5266TR	29x2.4	61-622	TLR/ S+PS/ Pro Bead	3C-AM	66	Black	Foldable

MTB ENDOURO



PERSUADER WET

CY NO.	SIZE	ETRTO	TECHNOLOGY	COMPOUND	TPI	COLOR	BEAD
H-5240TR	29x2.6	66-622	TLR/ Dual Defense/ Pro Bead	3C-AM	126	Black	Foldable
H-5240TR	29x2.6	66-622	TLR/ B To B/Pro bead	3C-AM	60	Black	Foldable
H-5240TR	29x2.4	61-622	TLR/ Dual Defense/ Pro Bead	3C-AM	126	Black	Foldable
H-5240TR	29x2.4	61-622	TLR/ B To B/Pro bead	3C-AM	60	Black	Foldable
H-5240TR	27.5x2.6	66-584	TLR/ Dual Defense/ Pro Bead	3C-AM	126	Black	Foldable
H-5240TR	27.5x2.6	66-584	TLR/ B To B/Pro bead	3C-AM	60	Black	Foldable
H-5240TR	27.5x2.4	61-584	TLR/ Dual Defense/ Pro Bead	3C-AM	126	Black	Foldable
H-5240TR	27.5x2.4	61-584	TLR/ B To B/Pro bead	3C-AM	60	Black	Foldable



PERSUADER DRY

CY NO.	SIZE	ETRTO	TECHNOLOGY	COMPOUND	TPI	COLOR	BEAD
H-5241TR	29x2.6	66-622	TLR/ Dual Defense/ Pro Bead	3C-AM	126	Black	Foldable
H-5241TR	29x2.6	66-622	TLR/ B To B/Pro bead	3C-AM	60	Black	Foldable
H-5241TR	29x2.4	61-622	TLR/ Dual Defense/ Pro Bead	3C-AM	126	Black	Foldable
H-5241TR	29x2.4	61-622	TLR/ B To B/Pro bead	3C-AM	60	Black	Foldable
H-5241TR	27.5x2.6	66-584	TLR/ Dual Defense/ Pro Bead	3C-AM	126	Black	Foldable
H-5241TR	27.5x2.6	66-584	TLR/ B To B/Pro bead	3C-AM	60	Black	Foldable
H-5241TR	27.5x2.4	61-584	TLR/ Dual Defense/ Pro Bead	3C-AM	126	Black	Foldable
H-5241TR	27.5x2.4	61-584	TLR/ B To B/Pro bead	3C-AM	60	Black	Foldable



PERSUADER SPEED

CY NO.	SIZE	ETRTO	TECHNOLOGY	COMPOUND	TPI	COLOR	BEAD
H-5242TR	29x2.6	66-622	TLR/ SAR/Pro bead	3C-AM	66	Black	Foldable
H-5242TR	27.5x2.6	66-584	TLR/ SAR/Pro bead	3C-AM	66	Black	Foldable
H-5242TR	27.5x2.4	61-584	TLR/ SAR/Pro bead	3C-AM	66	Black	Foldable

E-BIKE CITY

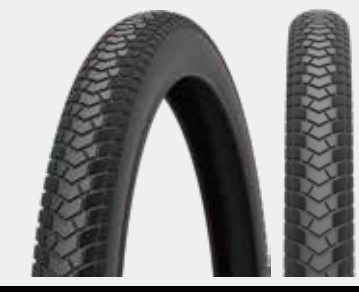


CITYGLIDE

CY NO.	SIZE	ETRTO	TECHNOLOGY	COMPOUND	TPI	COLOR	BEAD
H-5267	28x2.0	50-622	Rhino Skin/Reflective Stripe	E-MAXX	60	Black	Wire
H-5267	700x45C	47-622	Rhino Skin/Reflective Stripe	E-MAXX	60	Black	Wire
H-5267	700x38C	40-622	Rhino Skin/Reflective Stripe	E-MAXX	60	Black	Wire
H-5267	700x35C	37-622	Rhino Skin/Reflective Stripe	E-MAXX	60	Black	Wire



E-BIKE CITY



E-CARGO

CY NO.	SIZE	ETRTO	TECHNOLOGY	COMPOUND	TPI	COLOR	BEAD
H-5257E	27.5x2.35	60-584	DT Defence/Hippo Skin Pro/Reflective Stripe	E-MAXX	60	Black	Wire
H-5257E	26x2.35	60-559	DT Defence/Hippo Skin Pro/Reflective Stripe	E-MAXX	60	Black	Wire
H-5257E	26x2.15	55-559	DT Defence/Hippo Skin Pro/Reflective Stripe	E-MAXX	60	Black	Wire
H-5257E	24x2.35	60-507	DT Defence/Hippo Skin Pro/Reflective Stripe	E-MAXX	60	Black	Wire
H-5257E	24x2.15	55-507	DT Defence/Hippo Skin Pro/Reflective Stripe	E-MAXX	60	Black	Wire
H-5257E	20x2.35	60-406	DT Defence/Hippo Skin Pro/Reflective Stripe	E-MAXX	60	Black	Wire
H-5257E	20x2.15	55-406	DT Defence/Hippo Skin Pro/Reflective Stripe	E-MAXX	60	Black	Wire

FOLDING BIKE | BMX



MERLIN

CY NO.	SIZE	ETRTO	TECHNOLOGY	COMPOUND	TPI	COLOR	BEAD
H-496	20x18	28-451	Dino Skin	Silica-Maxx	120	Black	Foldable
H-496	20x18	28-451	Dino Skin	Silica-Maxx	120	Pink	Foldable



SPEED DEVIL

CY NO.	SIZE	ETRTO	TECHNOLOGY	COMPOUND	TPI	COLOR	BEAD		
H-5218	W409010	20x18	48-406	/	Single	120	Black	Foldable	275
H-5218	W405009	20x18	48-406	/	Single	60	Black	Foldable	380
H-5218	W405008	20x18	48-406	/	Single	60	Black	Wire	415
H-5212	W405013	20x18	41-406	/	Single	120	Black	Foldable	235
H-5212	W405012	20x18	41-406	/	Single	60	Black	Foldable	265
H-5212	W405011	20x18	41-406	/	Single	60	Black	Wire	300

TUBE (TPU)



TPU

PART No.	SIZE	ETRTO	VALVE	WEIGHT(g)
UC7C26322	700x25/32C	25/32-622	FV65	38
UC7C26321	700x25/32C	25/32-622	FV80	39
UC7C32452	700x32/45C	32/45-622	FV65	52
UC2B19253	26x1.90/2.50	47/60-559	FV48	78
UC2719253	27.5x1.90/2.50	47/60-584	FV48	79
UC2919253	29x1.90/2.50	47/60-622	FV48	83

TREAD PROTECTION

5 Grade
★★★★★

Protection Grade



DINO SKIN
KEVLAR 3 BREAKER

The best solution for anti-punctures, it is double protection for the tire. An extremely closed meshed and dense fabric (Kevlar) always used for flack jacket placed under the tread.

5 Grade
★★★★★

Protection Grade



5mm RUBBER BREAKER
RHINO SKIN

A layer of 5mm thick, special high elastic rubber, most effective protection breaker for bicycle tires, even a thumbtack won't harm it. Usually used in city/urban tires application.

4 Grade
★★★★★

Protection Grade



3mm RUBBER BREAKER
HIPPO SKIN PRO

A layer of 3mm rubber breaker, the extra puncture protection combined with the rubber-reinforced sidewalls ensures a high level of puncture protection and sidewall abrasion. Specially designed for cargo tires, where durability is the main focus.

4 Grade
★★★★★

Protection Grade



40x40 NYLON BREAKER
SHARK SKIN+

The upgrade edition of SHARK SKIN. Using 40x40 Nylon Canvas as breaker material, provide super puncture and tear resistance.

3 Grade
★★★★★

Protection Grade



1.5mm KEVLAR FLOC BREAKER
HIPPO SKIN

Kevlar Floc as a composite of mixture rubber and Kevlar fiber, 1.5mm layer between tread and casing, which improve the rigid of tire and puncture protection. It will be applied in range of city/urban tires.

3 Grade
★★★★★

Protection Grade



NYLON BREAKER
SHARK SKIN

High density Nylon breaker will not only keep light weight, but also provide highly puncture protection from glass, debris and other materials with sharp edge.

SIDEWALL PROTECTION

SPS(SHARK SKIN protection system on sidewall) present a great cut-resistant performance on sidewall against sharp rocks.



SPS
SHARK SKIN PROTECTION SYSTEM ON SIDEWALL

Choose S+PS(Shark skin+ Protection System on sidewall), will give you more confidence to ride, through the Rocky terrain, and treacherous trails where the risk of sidewall cuts and abrasions is high. Also very suited for tubeless ready tire conversion. It can save half quantity of sealing liquid, and keep the air pressure longer.



S+PS
SHARK SKIN + PROTECTION SYSTEM ON SIDEWALL

BEAD TO BEAD PROTECTION

Based on SHARK SKIN+ technology, while offers protection from Bead to Bead. This additional all-round puncture protection layer make the casings extremely durable against different damage.



B to B
SHARK SKIN + BEAD TO BEAD

The additional layer of protection from bead to bead, same material with the casing, present great protection both on sidewall and tread.



SAR
SHARK SKIN PROTECTION ALL ROUND

The Pro edition of "B to B", keep the same extreme protection for carcass, meanwhile the special rubber inside the carcass layers provides strengthened sidewall to ensure stability during freeride and downhill.



B to B PRO
SHARK SKIN + BEAD TO BEAD BUTYL IN SIDE

DOWNHILL PROTECTION

Extra butyl rubber offers extra safety and bead anti-puncture ability, to prevent pinch flats at low air pressure, also helps protect rim from hard hits and keep tire beads seat firmly with rim. Especially made for freeride and downhill use.



PRO BEAD
BUTYL INSERTED REINFORCED BEAD

DUAL DEFENSE
DUAL PLY CASING EXTRA DEFENSE

Dual Ply casing makes our DHFR tires even tougher and stonger!

ROAD



CY NO.	SIZE	ETRTO	TECHNOLOGY	COMPOUND	TPI	COLOR	BEAD
H-498TR	700x28C	28-622	Dino Skin/ B to B/TLR	Silica-Maxx	126	Black	Foldable
H-498TR	700x30C	30-622	Dino Skin/ B to B/TLR	Silica-Maxx	126	Black/Tanwall	Foldable
H-498TR	700x32C	32-622	Dino Skin/ B to B/TLR	Silica-Maxx	126	Black/Tanwall	Foldable
H-498	700x25C	25-622	Dino Skin	Silica-Maxx	120	Black	Foldable
H-498	700x28C	28-622	Dino Skin	Silica-Maxx	120	Black	Foldable
H-498	700x30C	30-622	Dino Skin	Silica-Maxx	120	Black	Foldable
H-498	700x32C	32-622	Dino Skin	Silica-Maxx	120	Black	Foldable
H-498	700x25C	25-622	Shark Skin	Silica-Training	60	Black	Foldable
H-498	700x28C	28-622	Shark Skin	Silica-Training	60	Black	Foldable
H-498	700x30C	30-622	Shark Skin	Silica-Training	60	Black	Foldable
H-498	700x32C	32-622	Shark Skin	Silica-Training	60	Black	Foldable

WOVEN



CY NO.	SIZE	ETRTO	TECHNOLOGY	COMPOUND	TPI	COLOR	BEAD
H-496TR	700x25C	25-622	Dino Skin/ B to B/TLR	Silica-Maxx	126	Black	Foldable
H-496TR	700x28C	28-622	Dino Skin/ B to B/TLR	Silica-Maxx	126	Black	Foldable
H-496TR	700x30C	30-622	Dino Skin/ B to B/TLR	Silica-Maxx	126	Black	Foldable
H-496	700x25C	25-622	Dino Skin	Silica-Maxx	120	Black	Foldable
H-496	700x28C	28-622	Dino Skin	Silica-Maxx	120	Black	Foldable
H-496	700x30C	30-622	Dino Skin	Silica-Maxx	120	Black	Foldable

MERLIN



CY NO.	SIZE	ETRTO	TECHNOLOGY	COMPOUND	TPI	COLOR	BEAD
H-457	700x25C	25-622	Shark Skin	Single	60	Black	Wire
H-457	700x28C	28-622	Shark Skin	Single	60	Black	Wire
H-457	700x23C	23-622		Single	30	Black	Wire
H-457	700x25C	25-622		Single	30	Black	Wire
H-457	700x28C	28-622		Single	30	Black	Wire

Small diamonds profile provides excellent cornering and grip performance on both dry and wet road condition.
Hippo Skin protection assures ideal puncture resistance ability on gravel road.
Dual corlor available!

MINI SHARK

GRAVEL



CY NO.	SIZE	ETRTO	TECHNOLOGY	COMPOUND	TPI	COLOR	BEAD
H-5224TR	700x50C	50-622	TLR/ SAR	Silica-Maxx	126	Black/Tanwall	Foldable
H-5224TR	700x45C	47-622	TLR/ SAR	Silica-Maxx	126	Black/Tanwall	Foldable
H-5224TR	700x40C	42-622	TLR/ SAR	Silica-Maxx	126	Black/Tanwall	Foldable
H-5224TR	700x38C	40-622	TLR/ SAR	Silica-Maxx	126	Black/Tanwall	Foldable
H-5224TR	700x35C	37-622	TLR/ SAR	Silica-Maxx	126	Black/Tanwall	Foldable
H-5224TR	700x50C	50-622	2C-MTB	66	Black/Tanwall	Foldable	
H-5224TR	700x45C	47-622	TLR/ SAR	2C-MTB	66	Black/Tanwall	Foldable
H-5224TR	700x40C	42-622	TLR/ SAR	2C-MTB	66	Black/Tanwall	Foldable
H-5224TR	700x38C	40-622	TLR/ SAR	2C-MTB	66	Black/Tanwall	Foldable
H-5224TR	700x35C	37-622	TLR/ SAR	2C-MTB	66	Black/Tanwall	Foldable
H-5224	700x50C	50-622	Shark Skin	2C-MTB	60	Black/Tanwall	Foldable
H-5224	700x45C	47-622	Shark Skin	2C-MTB	60	Black/Tanwall	Foldable
H-5224	700x40C	42-622	Shark Skin	2C-MTB	60	Black/Tanwall	Foldable
H-5224	700x38C	40-622	Shark Skin	2C-MTB	60	Black/Tanwall	Foldable
H-5224	700x35C	37-622	Shark Skin	2C-MTB	60	Black/Tanwall	Foldable



The dense arranged knobs in the centre of Gravel GP are designed for a low rolling resistance. The diamond shaped knobs open up direction shoulder to provide cornering grip and help evacuation in rainy conditions. These qualities make the Gravel GP the fastest tire of our Gravel family for on road and dry off road conditions or a perfect rear in combination with Gravel AT or MT.

GRAVEL GP



CY NO.	SIZE	ETRTO	TECHNOLOGY	COMPOUND	TPI	COLOR	BEAD
H-5269TR	700x50C	50-622	TLR/ SAR	Silica-Maxx	126	Black/Tanwall	Foldable
H-5269TR	700x45C	45-622	TLR/ SAR	Silica-Maxx	126	Black/Tanwall	Foldable
H-5269TR	700x40C	40-622	TLR/ SAR	Silica-Maxx	126	Black/Tanwall	Foldable
H-5269TR	700x50C	50-622	2C-MTB	66	Black/Tanwall	Foldable	
H-5269TR	700x45C	45-622	TLR/ SAR	2C-MTB	66	Black/Tanwall	Foldable
H-5269TR	700x40C	40-622	TLR/ SAR	2C-MTB	66	Black/Tanwall	Foldable
H-5269	700x50C	50-622	Shark Skin	2C-MTB	60	Black/Tanwall	Foldable
H-5269	700x45C	45-622	Shark Skin	2C-MTB	60	Black/Tanwall	Foldable
H-5269	700x40C	40-622	Shark Skin	2C-MTB	60	Black/Tanwall	Foldable

Gravel AT the allrounder in the Gravel category brings together all the positive attributes to guarantee a worry-free riding on and off road. The directional arrow treads balance rolling resistance and traction and help to vent water and debris. The additional lug on the open designed shoulder strengthens the knobs while cornering. On road or off road this tire can do it all.

GRAVEL AT



CY NO.	SIZE	ETRTO	TECHNOLOGY	COMPOUND	TPI	COLOR	BEAD
H-5244TR	700x38C	40-622	TLR/ SAR	2C-MTB	66	Black/Tanwall	Foldable
H-5244	700x38C	40-622	SPS	2C-MTB	60	Black/Tanwall	Foldable

GRAVEL MT

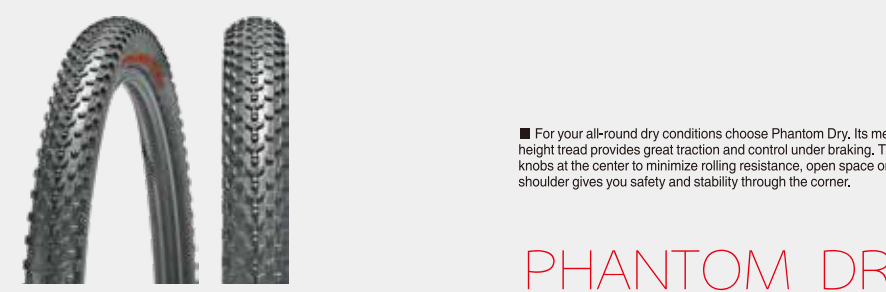
MTB XC/MARATHON



CY NO.	SIZE	ETRTO	TECHNOLOGY	COMPOUND	TPI	COLOR	BEAD
H-5233TR	29x2.3	58-622	TLR/ SPS	Silica Maxx	126	Black	Foldable
H-5233TR	29x2.3	58-622	TLR/ SPS	2C-MTB	66	Black	Foldable
H-5233TR	29x2.2	56-622	TLR/ SPS	Silica Maxx	126	Black	Foldable
H-5233TR	29x2.2	56-622	TLR/ SPS	2C-MTB	66	Black	Foldable

If you are looking for the fastest option than take Phantom Speed. It's small low center knobs have an excellent rolling resistance combined with aggressive shoulder knobs, you don't have to be afraid of the next corner.

PHANTOM SPEED

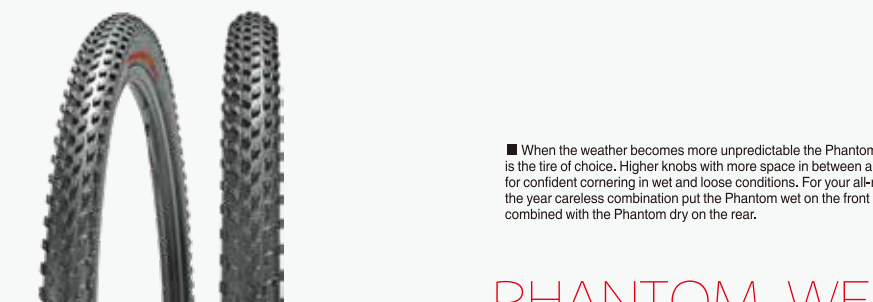


CY NO.	SIZE	ETRTO	TECHNOLOGY	COMPOUND	TPI	COLOR	BEAD
H-5234TR	29x2.4	61-622	TLR/ SPS	Silica Maxx	126	Black	Foldable
H-5234TR	29x2.4	61-622	TLR/ SPS	2C-MTB	66	Black	Foldable
H-5234TR	29x2.3	58-622	TLR/ SPS	Silica Maxx	126	Black	Foldable
H-5234TR	29x2.3	58-622	TLR/ SPS	2C-MTB	66	Black	Foldable
H-5234TR	29x2.2	56-622	TLR/ SPS	Silica Maxx	126	Black	Foldable
H-5234TR	29x2.2	56-622	TLR/ SPS	2C-MTB	66	Black	Foldable
H-5234TR	27.5x2.2	56-584	TLR/ SPS	Silica Maxx	126	Black	Foldable
H-5234TR	27.5x2.2	56-584	TLR/ SPS	2C-MTB	66	Black	Foldable

For your all-round dry conditions choose Phantom Dry. Its medium height tread provides great traction and control under braking. Tight knobs at the center to minimize rolling resistance, open space on the shoulder gives you safety and stability through the corner.

PHANTOM DRY

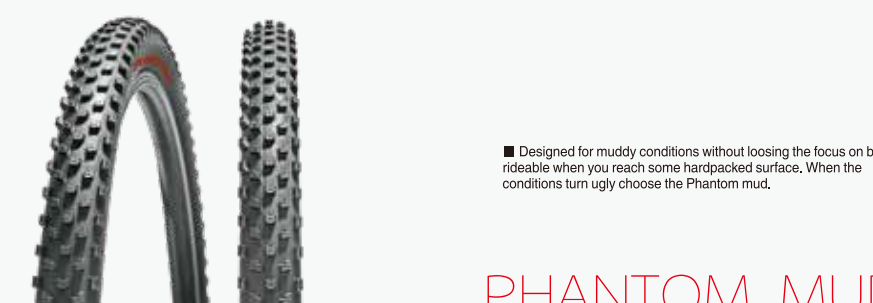
MTB XC/MARATHON



CY NO.	SIZE	ETRTO	TECHNOLOGY	COMPOUND	TPI	COLOR	BEAD
H-5235TR	29x2.4	61-622	TLR/ SPS	Silica Maxx	126	Black	Foldable
H-5235TR	29x2.4	61-622	TLR/ SPS	2C-MTB	66	Black	Foldable
H-5235TR	29x2.3	58-622	TLR/ SPS	Silica Maxx	126	Black	Foldable
H-5235TR	29x2.3	58-622	TLR/ SPS	2C-MTB	66	Black	Foldable
H-5235TR	29x2.2	55-622	TLR/ SPS	Silica Maxx	126	Black	Foldable
H-5235TR	29x2.2	55-622	TLR/ SPS	2C-MTB	66	Black	Foldable
H-5235TR	27.5x2.2	56-584	TLR/ SPS	Silica Maxx	126	Black	Foldable
H-5235TR	27.5x2.2	56-584	TLR/ SPS	2C-MTB	66	Black	Foldable

When the weather becomes more unpredictable the Phantom wet is the tire of choice. Higher knobs with more space in between allow for confident cornering in wet and loose conditions. For your all-round the year caseless combination put the Phantom wet on the front combined with the Phantom dry on the rear.

PHANTOM WET



CY NO.	SIZE	ETRTO	TECHNOLOGY	COMPOUND	TPI	COLOR	BEAD
H-5236TR	29x2.0	50-622	TLR/ SPS	Silica Maxx	126	Black	Foldable
H-5236TR	29x2.0	50-622	TLR/ SPS	2C-MTB	66	Black	Foldable

Designed for muddy conditions without losing the focus on being rideable when you reach some hardpacked surface. When the conditions turn ugly choose the Phantom mud.

PHANTOM MUD



ZHONGGE RUBBER GROUP COMPANY LIMITED
#1, No. 1 Street, Qianjiang District 310018
Hangzhou, China
TEL: +86-571-86755960
E-mail: sales2wheels@zgc-rubber.com
CHINA

ZHONGGE EUROPE GMBH
Holltalles 17 30419 Hannover Germany
GERMANY